

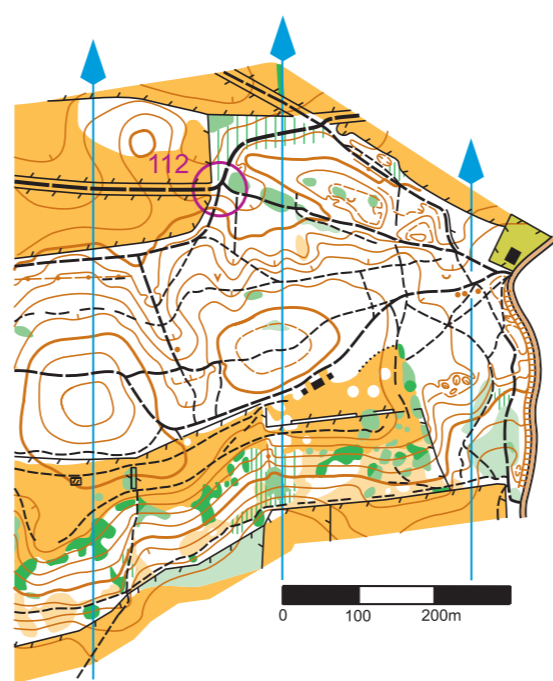
**Shalford Park**  
1:10,000



103 - Bridge, East side (fence)

Extract from Guildford Orienteers base map (2012)

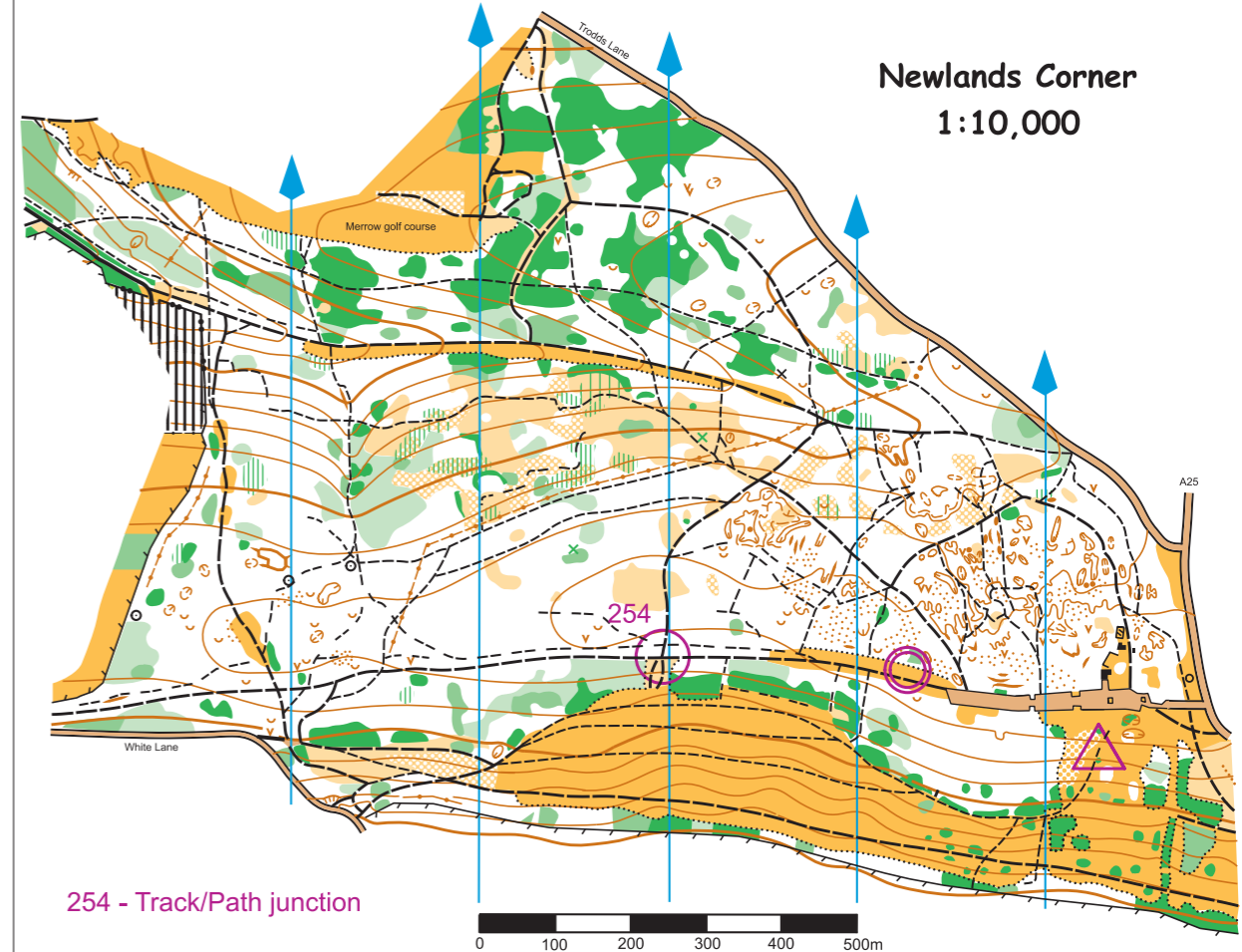
**The Chantry (East)**  
1:10,000



112 - Path crossing (path barrier)

Extract from Guildford Orienteers base map (2005)

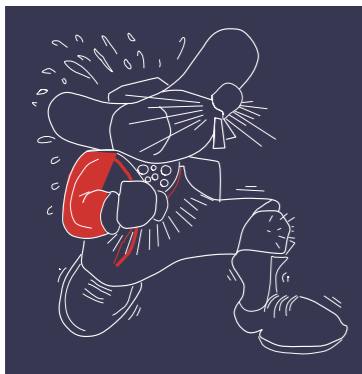
**Newlands Corner**  
1:10,000



254 - Track/Path junction

Extract from Guildford Orienteers base map (2007)

**Guildford Orienteers**  
guildfordorienteers.co.uk



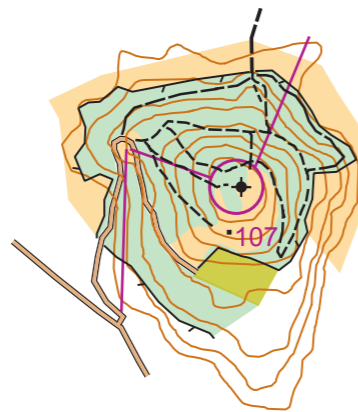
Cartography in Ocad10 by Keith Tonkin

Map extracts © Guildford Orienteers 2012  
(guildfordorienteers.co.uk)

All map extracts based on Ordnance Survey Mapping  
with the permission of Her Majesty's Stationery Office,  
© Crown Copyright, license number 100015287

British Orienteering event number 61659, 29 December 2012.

**Chinthurst Hill**  
1:4,000

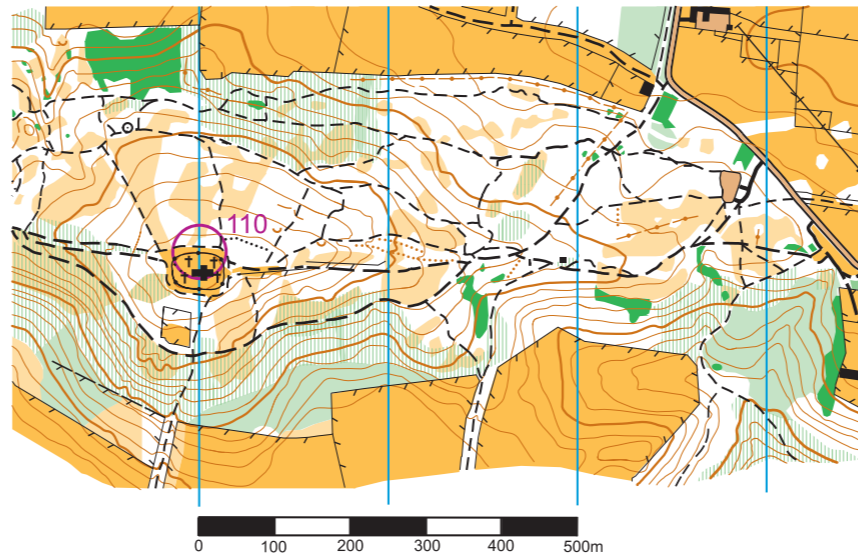


107 - Tower, west side

Chinthurst Hill was built as a folly in the 1930's. It is  
now owned by Surrey County Council and managed as  
an open space by Surrey Wildlife Trust

Original survey/cartography Keith Tonkin (2011), © Guildford Orienteers

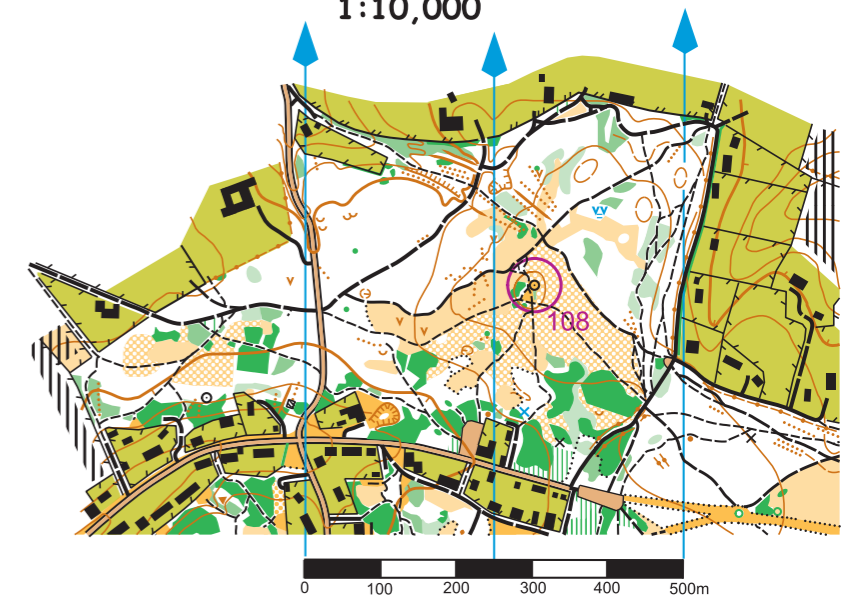
**St Martha's Hill**  
1:10,000



110 - St Martha's Church, North side (bench)

Extract from Guildford Orienteers base map (2000)

**Rosemary Hill (Blackheath)**  
1:10,000



108 - Rosemary Hill war memorial (bench)

Rosemary Hill war memorial is dedicated to the villagers of Blackheath who lost their lives in the  
Great War.

Extract from Guildford Orienteers base map (2009)

**Pilgrims Wey Challenge, Saturday 29 December 2012**